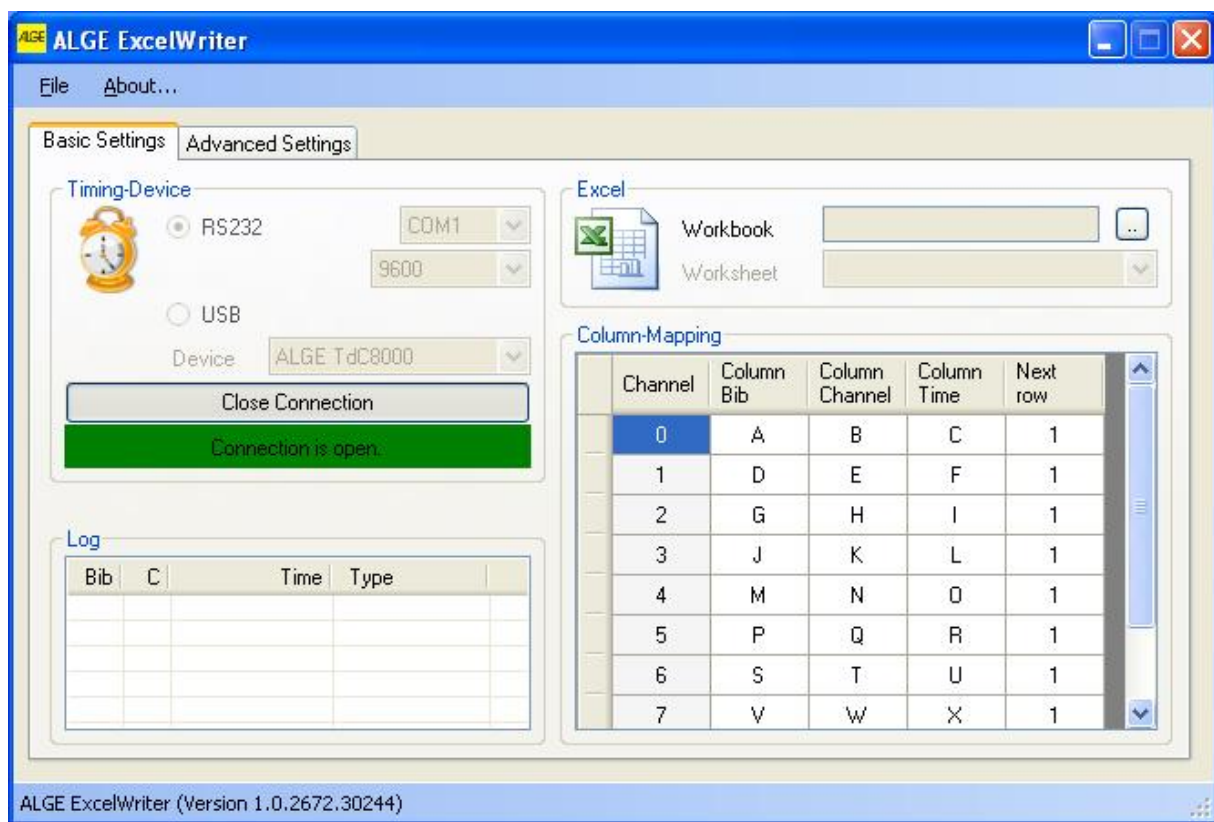


# Alge Excel Writer



**Table of contents**

<b>1</b>	<b>General</b> .....	<b>3</b>
<b>2</b>	<b>Installation</b> .....	<b>3</b>
<u>2.1</u>	<u>Installation requirements:</u> .....	<u>3</u>
<u>2.2</u>	<u>Installation of program</u> .....	<u>3</u>
<b>3</b>	<b>How to use</b> .....	<b>4</b>
<u>3.1</u>	<u>Overview</u> .....	<u>4</u>
3.1.1	Timing device.....	4
3.1.2	File selection.....	4
3.1.3	Column mapping. ....	5
<u>3.2</u>	<u>Advanced Settings</u> .....	<u>5</u>
3.2.1	User Interaction .....	6
<u>3.3</u>	<u>Program specific behavior</u> .....	<u>6</u>
3.3.1	Timy Backup .....	6
3.3.2	Other Hints.....	6
<b>4</b>	<b>Annex</b> .....	<b>7</b>
<u>4.1</u>	<u>Limitations:</u> .....	<u>7</u>
<u>4.2</u>	<u>Hints working with MS Excel:</u> .....	<u>7</u>
<u>4.3</u>	<u>Translation</u> .....	<u>7</u>
<u>4.4</u>	<u>Problem Report</u> .....	<u>7</u>
<u>4.5</u>	<u>Notes</u> .....	<u>8</u>

**Copyright by:**

**ALGE-TIMING** GmbH  
Rotkreuzstrasse 39  
A-6890 Lustenau  
Phone: +43 5577-85966  
Fax: +43 5577-85966-4  
e-Mail: [office@alge-timing.com](mailto:office@alge-timing.com)  
Internet: <http://www.alge-timing.com>

## 1 General

Many Alge-Timing customers have created analysis and/or lists on basis of MS Excel and would like to import the data via a serial or USB interface.

For this purpose, among others, the Excel Write has been designed.

Currently supported devices are: Timy, TDC 4000/8000/8001, S3, S4 and Comet. At the moment it is available in German and English. In case you require a translation into your language, please refer to chapter [Translation](#).

This program is FREEWARE, we can therefore not grant any guarantee and/or responsibility.

## 2 Installation

### 2.1 *Installation requirements:*

The program runs on MS Windows operating system 2000/XP/Vista\* with installed .NET 4.0 Framework from Microsoft. Also, at least a MDAC version 2.8 has to be installed. The .NET Framework and MDAC V2.8 are not included at the ALGE CD but can be obtained free of charge from Microsoft.

MS Office Version 2000 or XP or 2003 must be installed.

### 2.2 *Installation of program*

If the installation requirements are met, you can start the installation by starting the setup program [Setup\\_ExcelWriter.exe](#).

Please follow the installation instructions.

The Timy USB driver is not automatically installed. Please read the manual (<http://www.alge-timing.com/alge/download/software/TimyUSBDriver.exe>) included in the driver package for further information.

## **3 How to use**

### **3.1 Overview**

When starting the program you are automatically directed to the menu "Overview". Here you can set the following:

#### **3.1.1 Timing device**

Here you set the connected timing device. You can choose between the following interfaces:

- RS 232 (Cable no. 067-02 or 904-02): TDC 8000/8001, Comet, Timy Backup and Stopwatch with TIDO, S4 Split/Sequential and 18 Channel Timer.
- RS 232 (Cable no. 068-02) TDC 4000, S3 (Program Split on printer interface with 2400 Baud, only mode "advance rows")
- RS 232 (Cable no. 205-02) Timy Backup and Stopwatch without TIDO
- Timy USB (Cable no. USB-AB): Programs Stopwatch and Backup

In case you use the RS232 interface, please make sure that you set the correct interface and the suitable baud rate.

The standard baud rate for TDC and Timy is 9600 baud. Please read the corresponding operating manual of the device you use.

The Timy USB driver is not automatically installed. Please read the instruction (<http://www.alge-timing.com/alge/download/software/TimyUSBDriver.exe>) included in the driver package for further information.

After setting the interface you can establish the connection by clicking "open connection".

#### **3.1.2 File selection**

Under this menu item you can choose the desired Excel file. When you choose the desired file, it is directly loaded in MS Excel.

### 3.1.3 Column mapping.

Here you set the corresponding columns into which the imported data is to be saved.

Column-Mapping

Channel	Column Bib	Column Channel	Column Time	Next row
C0	A	B	G	1
C1	A	C	H	1
MT	A	E	J	1
RT	A	D	I	1
TT	A	F	K	1

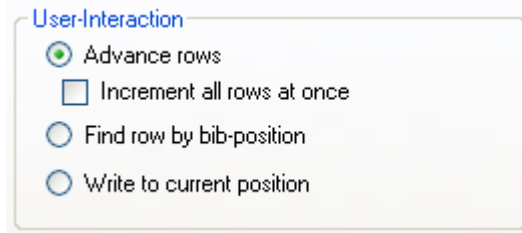
In the 1<sup>st</sup> column you set the channel number of the timing device. C0=start channel daytime; C1=finish channel; RT=run time; TT = total time; MT=memory time; In this example the start number is situated in column "B". The channel column is not used. The time is also written in the stated column: Start time = Column "C"; finish time = column "D"; running time = column "D". „First column“ means: At this place the next data will be entered. But you can adjust it under "Advanced settings".

## 3.2 Advanced Settings

In the Advanced Settings you can set the following:

- Templates: Here you can choose between 2 different templates: 10 channel and single timing software. These templates concern the settings of the column allocation and the settings "user interaction".
- Minimize in system-tray: Once the program is set, it can be minimized and stay in the background. You can then concentrate on working in Excel. With double click on the symbol the program is restored.
- Load standard settings: restore pre settings
- User Interaction: See next item

### 3.2.1 User Interaction



At User-Interaction you can set into which row the data is written:

- Advance rows: Each time is written into a new row, starting in the row that is defined as “next row” in [column mapping](#) .  
If you select “increment all rows at once”, a new row is only started in case a new bib is recognized.
- Find row by bib-position: The program searches for the suiting bib-number (has to be entered beforehand) in column Bib-No. and enters the times there
- Write to current position: The next time received is saved in the selected (current) row.

## 3.3 *Program specific behavior*

### 3.3.1 Timy Backup

At the program “Timy Backup” there is a continuous number instead of the start number. You have the possibility to enter the start numbers explicit manually. You can mark this in the Timy with a “\*”. This can be set up in Menu/Backup/STN \*. In this case Excel Writer will use the start number. Otherwise there will be always the start number 0.

### 3.3.2 Other Hints

The command „request times“ works only with the Devices TDC 8000/8001 and Timy. On the other devices the transmitting of the times must be started manually. You can do this by sending or printing times. For e.g. TDC 4000: print out of a classement.

## 4 Annex

### 4.1 Limitations:

This program works only with installed MS Office. Tested Versions are: Office 2000/XP/2003 and 2007.

### 4.2 Hints working with MS Excel:

When working with MS Excel, please take into account that this program has not been designed to work with times.

Thus, various difficulties might occur:

#### Formatting:

The formatting is decisive for the time display. Usually, it is shown as hh:mm:ss,000. It can be stated with a maximum accuracy of 1/1000.

The last figure is ALWAYS rounded, e.g. 29.7187 is shown as 29.719. Should you set the formatting to 1/100, 29.72 would show.

MS Excel can only work with a resolution of max. 1/1000. Excel Writer will cut the last digit if you choose 1/10000 resolution. In this case a calculation error can happen.

C0	C1	RT	Calculated
20:30:41,888	20:30:43,423	0:00:01,534	0:00:01,535

The timing device will calculate at maximum precision. That is the reason for this behavior. You should choose a maximum precision of 1/1000 on the timing device to avoid this error.

#### Calculation:

There is a similar problem with calculating the day times:

If you calculate with day times, differences can consistently occur as MS Excel internally calculates with floating point numbers that only dispose of a limited accuracy.

Example:

12:00:00,000-00:00:00,0004 = 12:00:00,000

### 4.3 Translation

Please contact *Alge-Timing* in case you would like to have the program translated into your language.

### 4.4 Problem Report

Should a mistake occur with this program, please write an email to [office@alge-timing.com](mailto:office@alge-timing.com). When writing an email to us, please include the following:

- Detailed description of the mistake, if possible with monitor picture.
- Used program version. Please make sure to use the latest program version. You can find it in Help/about
- Used device.
- Cable number of used device.

